

ROPEBLOCK



QUALITY TYPE APPROVAL



Licensed under
API Spec 9A



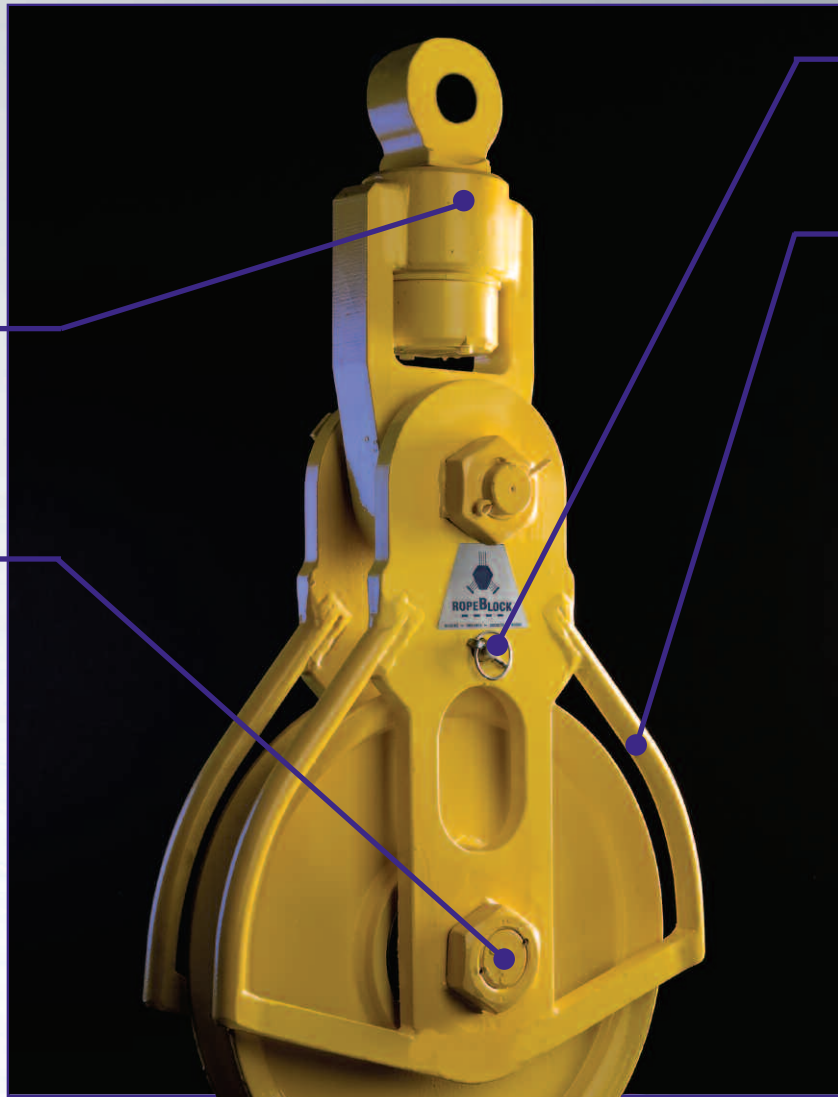
This trade approval by
American Bureau of Shipping



Manufactured from high tensile alloy steel, resulting in high capacity low weight ratio

Open swivel with roller thrust bearings in block suspension allows for rotation under full load

Sheave runs on low friction, high capacity, dynamically rated, double sealed roller bearings



Quick removable lineguard retains rigging in block

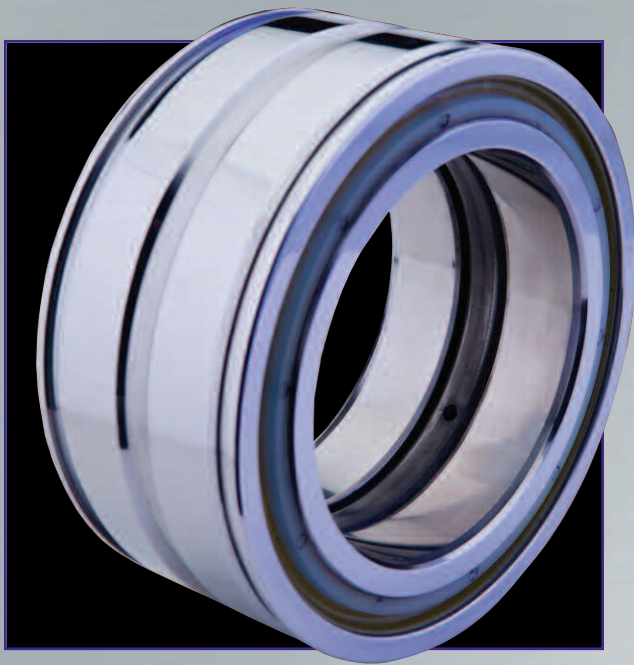
Inner and outer sling guard on side plates prevent damage to wire rope slings



Standard machined swivel eye (shown above) accepts shackle pin. Upset style (shown at left) accepts shackle bail. The upset eye, thereby, reduces additional necessary hardware requirements.

Standard capacities from 22-150 ton capacities up to 350 ton capacities available.

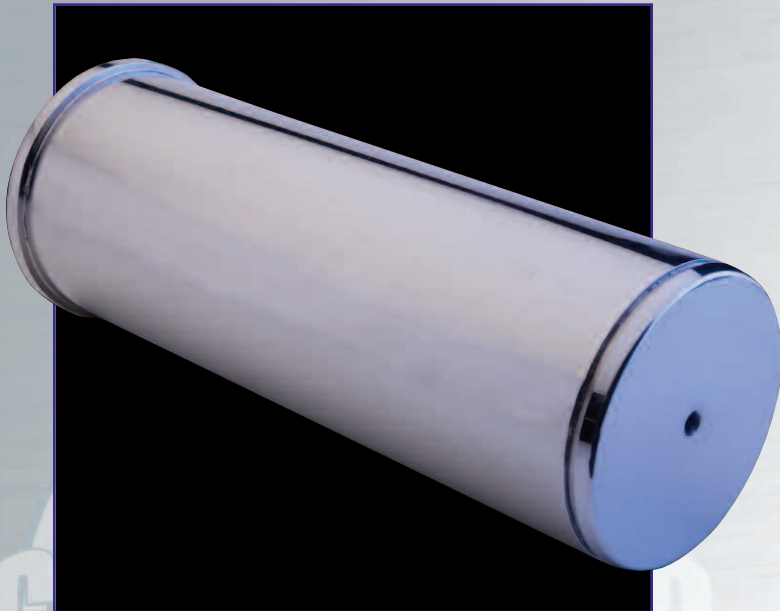




HIGH CAPACITY BEARINGS

Comparatively large, high capacity, dynamically rated, double sealed roller bearings were designed by INA in cooperation with a major internationally known crane manufacturer. Especially for wire rope sheaves, the bearings themselves, without the use of friction washers, allow for up to 2° of sideload/fleet angle. Many block manufacturers may publish a 2° allowable fleet angle on the sheaves in their blocks while using bearings for which the manufacturer allows for between 0° and $.5^{\circ}$ of fleet angle.

RopeBlock's use of this special bearing allows for up to 8x the fleet angle without the use of friction washers. Friction washers are only used on single sheave blocks to center the sheave.



CENTER PIN

RopeBlocks Crane Block Center Pins are the largest in the industry, ranging from 1.43X to 2.25X larger than competitors. This greater amount of surface area provides greatly reduced bearing pressures and radial loads against the pin providing greatly improved overall block life.

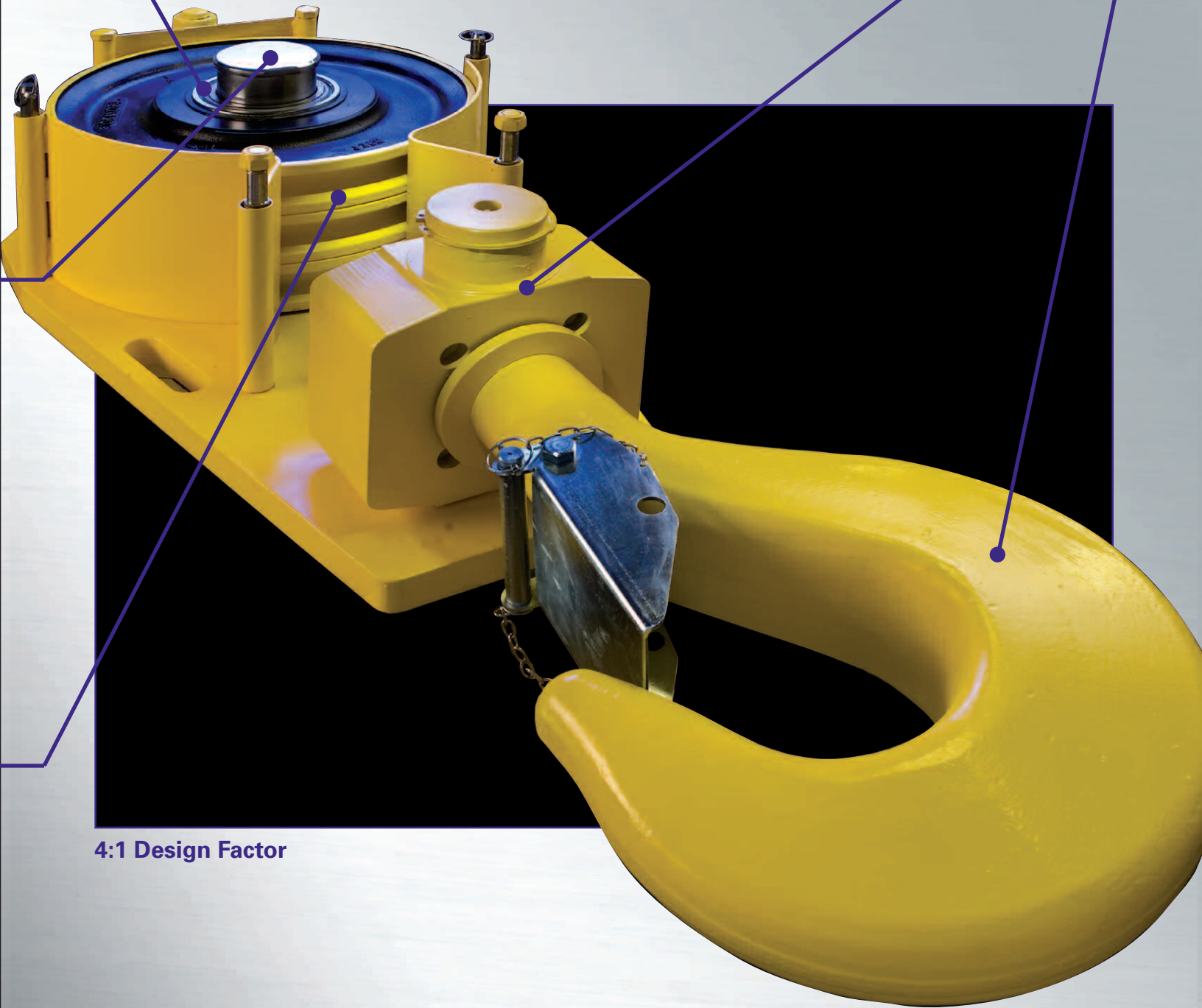


WIRE ROPE SHEAVES

Sheaves are designed to provide optimal D/d ratios for even the most modern high performance wire rope constructions. The diameters of these sheaves are called out by actual tread diameter rather than nominal O.D. for more accuracy in ascertaining wire rope compatibility. Groove profiles and rim angles are designed to maximize wire rope life by reducing the adverse impacts of wire rope entry to and exit from the sheave groove.

**Standard and Fast-Reeve models available from
8 to 350 ton capacities.**

**Custom designs and twin blocks available
from 5 to 1,600 ton capacities.**



4:1 Design Factor

**Ultra-Compact Fast Reeve and Quick Removable
Cheek Weight models available.**

LOAD HOOK AND TRUNNION

- Manufactured to DIN standard 15400 using I-Beam design providing stress equalization throughout hook.
- All hooks are forged, proof loaded, charpy impact tested (at -4°F), ultrasonic tested and magnetic particle inspected to insure quality. Certifications are thereafter provided individually with each hook.
- Special non-galling DIN standard threading is used on hook shanks to facilitate easy removal and inspection of all load bearing hook sections in conformance with ANSI B30.20.
- All hooks now have the heavy duty locking latch pictured on center block with locking pin storage location.
- Blocks in sizes 40 ton+ are provided with standard 4-position locking mechanism on the trunnion. This locking mechanism is constructed from removable non-welded components to facilitate repair.
- Hook turns on recessed thrust bearing, protecting bearings from dirt and moisture and is locked in place with bolted keyway.
- Trunnion built with protected grease fittings for wear reducing journals.

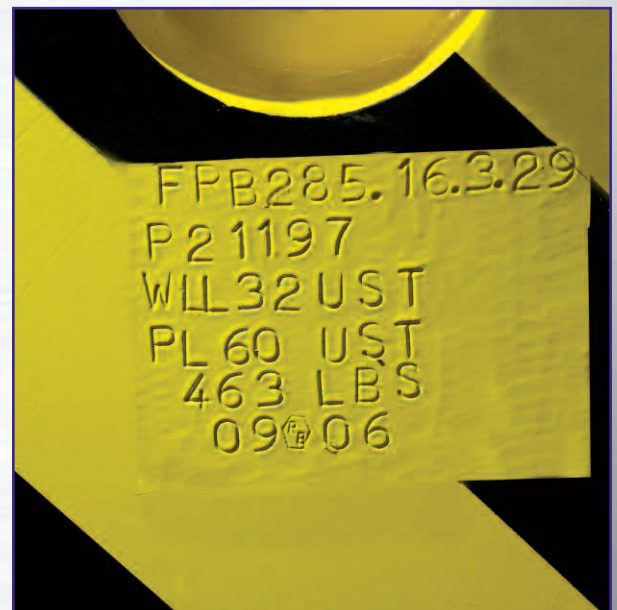


BLOCK IDENTIFICATION

It may seem like a small matter, but rather than using a short lived tag to provide necessary block identification information. Each block is permanently stamped with necessary identification information. The stamping includes:

Model Number
Certification Number
Working Load
Proof Load
Actual Weight
Date of Manufacture

Each individual component is also marked with stamped identification codes.



Design, Specifications for RopeBlock Snatch Blocks (VB models)



Design, Specifications for RopeBlock Overhaul Balls (OHB models)



- Blocks designed with safety factor 4:1.
- All blocks individually proof tested and stamped with certification number, model number, proof load, working load, actual weight and date of manufacture.
- Manufactured from high tensile alloy steel for light weight / high capacity ratio.
- Sheave running on lubricated bronze bushing.
- Open swivel with bronze thrust bearing lubricated through protected grease nipple.
- Available with following fittings:
 - Machined Swivel Stud Eye with Shackle with bronze thrust bearing lubricated through protected grease nipple.
 - Standard machined oblong-swivel eye accepts shackle pin (standard) or shackle ear (upset) directly into spreader bar or lifting fixture.
 - Or available with swivel hook.
- Standard capacity ranges from 22-150T. Capacities up to 350T available.
- Delivered edge free with a durable 2-part, high quality yellow finish.

- Overhaul Balls designed with safety factor 4:1 in load group 1BM acc. DIN 15400.
- Standard suitable for up to minus 20°C applications. Minus 40°C available on request.
- All balls individually proof tested – Stamped with certification number, model number, proof load, working load, actual weight and date of mgf.
- Top or bottom swiveling on Class 1, high capacity, greased and easy running roller thrust bearing.
- Available with forged DIN hook or eye-hook.
- DIN-hooks with identifiable, heavy duty positive locking latch with pin lanyard/keeper.
- Accurate CNC machining allows for perfect load path alignment and enabling easy parts replacement/interchangeability.
- Closed body in forged high tensile steel.
- Standard ranges from 3.2-30T capacities. Capacities up to 350T available.
- Delivered edge free with a durable 2-part, high quality yellow finish.

DISTRIBUTED BY:



2339 NORTH 34TH DRIVE
PHOENIX, ARIZONA 85009

(602) 269-7878
FAX (602) 278-5075
WWW.WIREROPE.NET